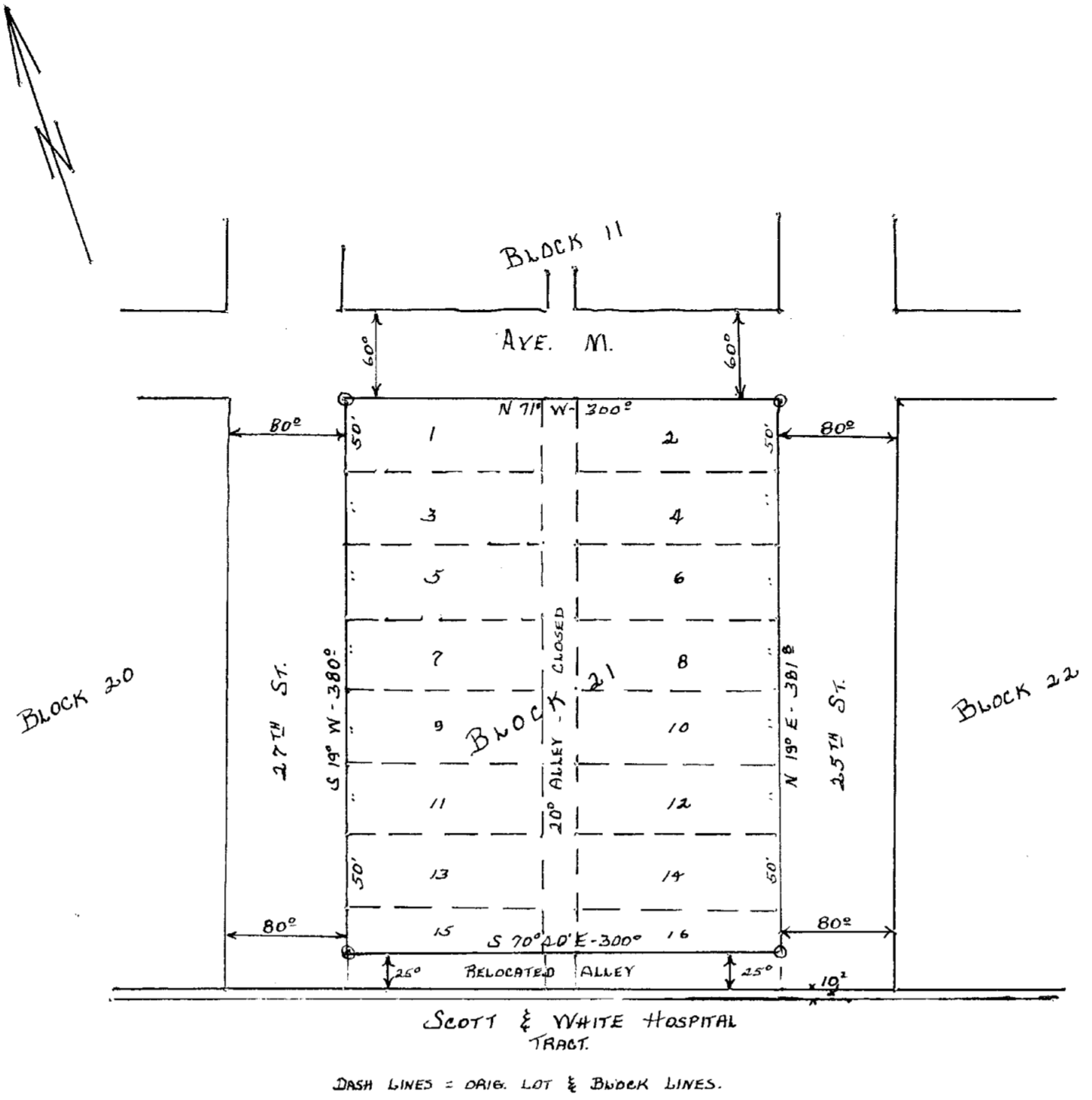


A
158C



DASH LINES = ORIG. LOT & BLOCK LINES.

I, FRED WILLIAMSON, LICENSED STATE LAND SURVEYOR, DO HEREBY CERTIFY THAT THIS IS A TRUE AND CORRECT PLAT OF BLOCK 21, TAL-COE PLACE, TEMPLE TEXAS AS REPLATTED.

FRED WILLIAMSON

REPLATTING BLOCK 21
TAL-COE PLACE
TEMPLE, TEXAS

SAFEWAY STORES - DEVELOPERS.
FRED WILLIAMSON & CO., SURVEYORS.
4-9-1955 1" = 100' 972-B.

Recommended for Final Approval:
Joe C. Gilbreth 5-2-55
City Engineer Date
Approved: J.L. Head 5-2-55
Chmn. City Planning & Zoning Brd. Date
L.H. Smith 6-8-55
Supt. of Water & Sewer Dept. Date

I hereby certify that the above and foregoing Plat of Replatting Block 21 Tal-Coe Place Addition to the City of Temple, Texas was approved by the Board of Commissioners of the City of Temple on the 10th day of May, 1955.

This approval shall be invalid unless the approved plat of such addition is recorded in the office of the County Clerk of Bell County, Texas within thirty (30) days from said date of final approval.

Said addition shall be subject to all the requirements of the Platting Ordinance of the City of Temple.

Witness my hand this 8 day of June, 1955.

D.H. Vannoy
City Comptroller