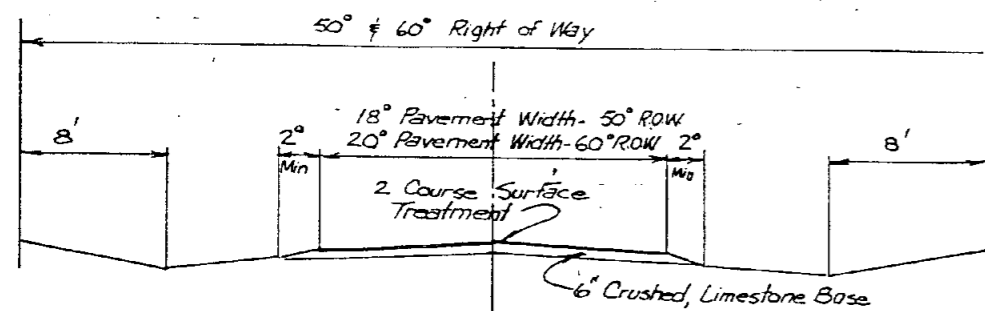


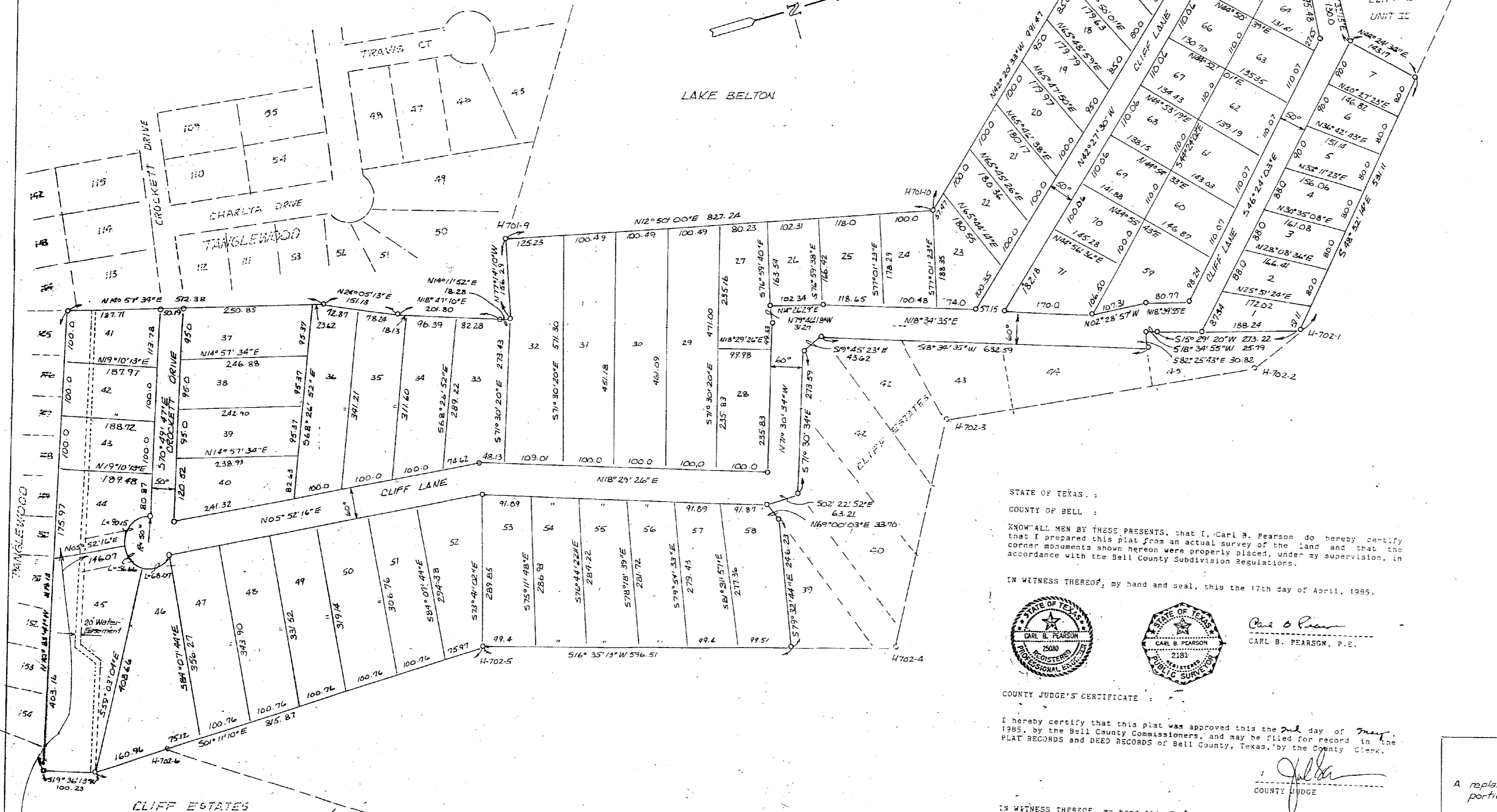
A
378



Typical Street Section



LAKE BELTON



STATE OF TEXAS :
 COUNTY OF BELL :
 KNOW ALL MEN BY THESE PRESENTS, that I, Carl B. Pearson do hereby certify that I prepared this plat from an actual survey of the land and that the corner monuments shown hereon were properly placed, under my supervision, in accordance with the Bell County Subdivision Regulations.

IN WITNESS THEREOF, my hand and seal, this the 17th day of April, 1985.



Carl B. Pearson
 CARL B. PEARSON, P.E.

COUNTY JUDGE'S CERTIFICATE :
 I hereby certify that this plat was approved this the 2nd day of May, 1985, by the Bell County Commissioners, and may be filed for record in the PLAT RECORDS and DEED RECORDS of Bell County, Texas, by the County Clerk.

J. L. [Signature]
 COUNTY JUDGE

IN WITNESS THEREOF, my hand this 2nd day of May, 1985.



Vada Sutton
 NOTARY PUBLIC

| | | |
|---|---------|--------|
| TANGLEWOOD II | | |
| A replat of a portion of Cliff Estates, Unit II and a portion of the Re-subdivision of Cliff Estates. | | |
| BELL COUNTY, TEXAS | | |
| DOUBLE DIAMOND INC. | | |
| TEMPLE CIVIL ENGINEERING | | BP 745 |
| 4-17-85 | 1"=100' | D-674 |

Dedication Vol. 2052 Pg. 454

Note: This section of roadway abandoned by Bell County Commissioners Court on 8 April 1985