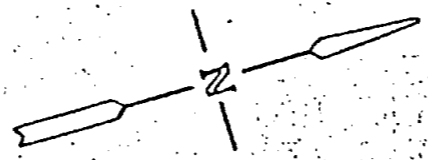
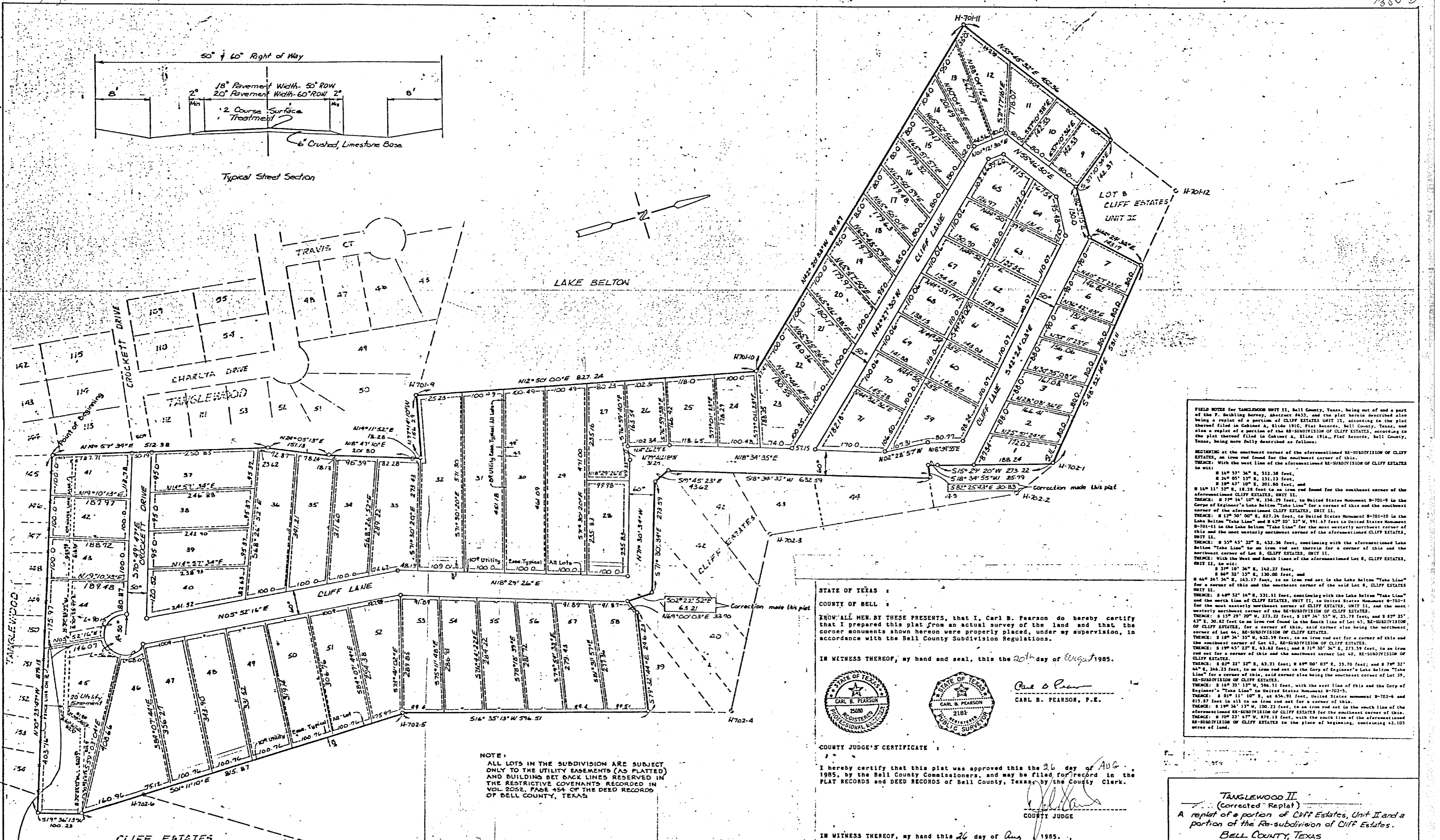


Typical Street Section



LAKE BELTON

FIELD NOTES for TANGLEWOOD UNIT II, Bell County, Texas, being out of and a part of the F. Beilberg Survey, Abstract 9633, and the plat herein described also being a replat of a portion of CLIFF ESTATES UNIT II, according to the plat thereof filed in Cabinet A, Slide 191C, Plat Records, Bell County, Texas, and also a replat of a portion of the RE-SUBDIVISION OF CLIFF ESTATES, according to the plat thereof filed in Cabinet A, Slide 191A, Plat Records, Bell County, Texas, being more fully described as follows:

RECITING that the southeast corner of the aforementioned RE-SUBDIVISION OF CLIFF ESTATES, an iron rod found for the southeast corner of this.

THENCE: With the west line of the aforementioned RE-SUBDIVISION OF CLIFF ESTATES to wit:

- N 14° 57' 34" E, 312.36 feet,
- N 24° 05' 13" E, 151.13 feet,
- S 14° 43' 10" E, 201.80 feet, and
- N 14° 11' 32" E, 18.28 feet to an iron rod found for the southeast corner of the aforementioned CLIFF ESTATES, UNIT II.

THENCE: S 77° 14' 10" W, 154.29 feet, to United States Monument H-701-9 in the Corp of Engineer's Lake Belton "Take Line" for a corner of this and the southwest corner of the aforementioned CLIFF ESTATES, UNIT II.

THENCE: S 12° 50' 00" E, 827.24 feet, to United States Monument H-701-10 in the Corp of Engineer's Lake Belton "Take Line" and S 47° 22' 33" W, 791.43 feet to United States Monument H-701-11 in the Lake Belton "Take Line" for the most westerly northwest corner of this and the most westerly northwest corner of the aforementioned CLIFF ESTATES, UNIT II.

THENCE: S 55° 43' 23" E, 432.36 feet, continuing with the aforementioned Lake Belton "Take Line" to an iron rod set therefor for a corner of this and the southwest corner of Lot A, CLIFF ESTATES, UNIT II.

THENCE: With the West and South lines of the aforementioned Lot A, CLIFF ESTATES, UNIT II, to wit:

- S 2° 10' 34" E, 162.37 feet, and
- S 64° 32' 15" E, 130.00 feet, and
- S 44° 24' 35" E, 143.17 feet, to an iron rod set in the Lake Belton "Take Line" for a corner of this and the southeast corner of the said Lot A, CLIFF ESTATES UNIT II.

THENCE: S 48° 52' 14" E, 331.11 feet, continuing with the Lake Belton "Take Line" and the north line of CLIFF ESTATES, UNIT II, to United States Monument H-702-1 for the most westerly northwest corner of CLIFF ESTATES, UNIT II, and the most westerly northeast corner of the RE-SUBDIVISION OF CLIFF ESTATES.

THENCE: S 15° 29' 20" W, 273.22 feet, S 18° 34' 53" W, 25.79 feet, and S 82° 25' 43" E, 30.82 feet to an iron rod found in the South line of Lot 45, RE-SUBDIVISION OF CLIFF ESTATES, for a corner of this, said corner also being the northeast corner of Lot 44, RE-SUBDIVISION OF CLIFF ESTATES.

THENCE: S 18° 34' 53" W, 832.59 feet, to an iron rod set for a corner of this and the southeast corner of Lot 42, RE-SUBDIVISION OF CLIFF ESTATES.

THENCE: S 19° 45' 23" E, 43.82 feet, and S 71° 30' 34" E, 273.59 feet, to an iron rod set for a corner of this and the southeast corner Lot 40, RE-SUBDIVISION OF CLIFF ESTATES.

THENCE: S 02° 22' 53" E, 63.21 feet; S 69° 00' 03" E, 33.70 feet; and S 79° 32' 44" E, 246.23 feet, to an iron rod set in the Corp of Engineer's Lake Belton "Take Line" for a corner of this, said corner also being the southeast corner of Lot 39, RE-SUBDIVISION OF CLIFF ESTATES.

THENCE: S 16° 35' 13" W, 596.51 feet, with the east line of this and the Corp of Engineer's "Take Line" to United States Monument H-702-5.

THENCE: S 01° 11' 10" E, at 634.91 feet, United States Monument H-702-6 and 813.87 feet in all to an iron rod set for a corner of this.

THENCE: S 18° 34' 53" W, 100.23 feet, to an iron rod set in the south line of the aforementioned RE-SUBDIVISION OF CLIFF ESTATES for the southeast corner of this.

THENCE: S 10° 23' 47" W, 479.13 feet, with the south line of the aforementioned RE-SUBDIVISION OF CLIFF ESTATES to the place of beginning, containing 42.105 acres of land.

STATE OF TEXAS
 COUNTY OF BELL

KNOW ALL MEN BY THESE PRESENTS, that I, Carl B. Pearson do hereby certify that I prepared this plat from an actual survey of the land and that the corner monuments shown hereon were properly placed, under my supervision, in accordance with the Bell County Subdivision Regulations.

IN WITNESS THEREOF, my hand and seal, this the 20th day of August 1985.



Carl B. Pearson
 CARL B. PEARSON, P.E.

COUNTY JUDGE'S CERTIFICATE

I hereby certify that this plat was approved this the 26 day of AUG., 1985, by the Bell County Commissioners, and may be filed for record in the PLAT RECORDS and DEED RECORDS of Bell County, Texas, by the County Clerk.

IN WITNESS THEREOF, my hand this 26 day of Aug 1985.

COURT JUDGE

NOTARY PUBLIC

NOTE:
 ALL LOTS IN THE SUBDIVISION ARE SUBJECT ONLY TO THE UTILITY EASEMENTS (AS PLATTED) AND BUILDING SET BACK LINES RESERVED IN THE RESTRICTIVE COVENANTS RECORDED IN VOL. 2052, PAGE 454 OF THE DEED RECORDS OF BELL COUNTY, TEXAS

TANGLEWOOD II (Corrected Replat)		
A replat of a portion of Cliff Estates, Unit II and a portion of the Re-subdivision of Cliff Estates.		
BELL COUNTY, TEXAS		
DOUBLE DIAMOND INC.		
TEMPLE CIVIL ENGINEERING.		
8-20-85	1"=100'	D-674

Note: This section of Roadway abandoned by Bell County Commissioners' Court on 8 April 1985

Dedication Vol. 2086 Page 540