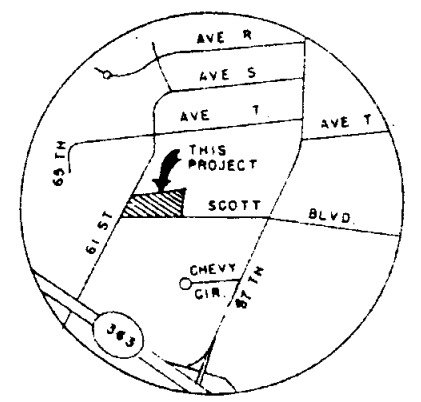
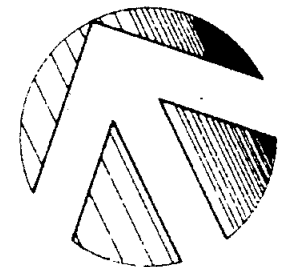
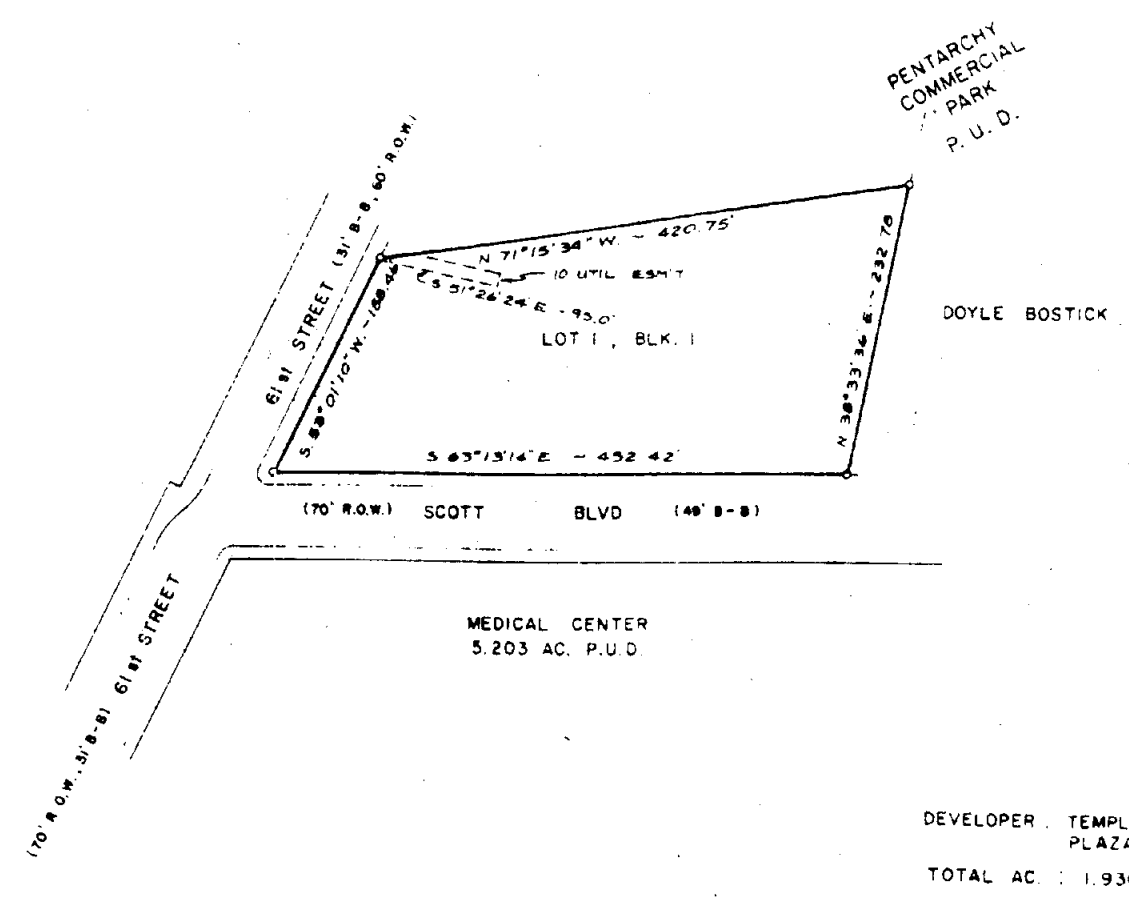


54-C

54-C



VICINITY MAP  
N.T.S.



DEVELOPER: TEMPLE PROFESSIONAL  
PLAZA NORTH PARTNERSHIP  
TOTAL AC.: 1.936 AC

Recommended for Final Approval:

Director of Engineering \_\_\_\_\_ Date \_\_\_\_\_

Approved: \_\_\_\_\_

Chairman, City Planning & Zoning Board \_\_\_\_\_ Date \_\_\_\_\_

Director of Public Utilities \_\_\_\_\_ Date \_\_\_\_\_

I hereby certify that the above and foregoing Plat of Lot 1, Block 1, Temple Professional Plaza North Subdivision, to the City of Temple, Bell County, Texas, was approved by the Board of Commissioners of the City of Temple, on the \_\_\_\_\_ day of \_\_\_\_\_, A.D. 1980.

This approval shall be invalid unless the approved plat of such subdivision is recorded in the office of the County Clerk of Bell County, Texas, within thirty (30) days from said date of final approval.

Said subdivision lies within the City limits of Temple, and shall be subject to all requirements of the Platting Ordinance of the City of Temple.

WITNES MY HAND AND SEAL, this the \_\_\_\_\_ day of \_\_\_\_\_, A.D. 1980.

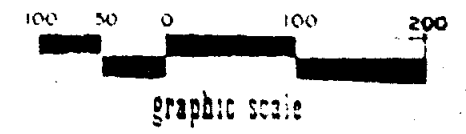
*[Signature]*  
Assistant City Secretary

STATE OF TEXAS I KNOW ALL MEN BY THESE PRESENTS, that  
COUNTY OF BELL I I, Victor D. Turley, Registered Professional Engineer, do hereby certify that I did cause to be surveyed on the ground the said tract of land and that the corner monuments shown thereon were properly placed in accordance with the subdivision regulations of the City of Temple, Bell County, Texas.  
IN WITNESS WHEREOF, my hand and seal, this the 29th day of January, A.D. 1980.



*[Signature]*  
Registered Professional Engineer

THIS PLAT IS SUBMITTED FOR PRELIMINARY AND FINAL APPROVAL SIMULTANEOUSLY.



TEMPLE PROFESSIONAL  
PLAZA NORTH  
SUBDIVISION  
DRAWN BY JML  
PL. 8117-0

FINAL PLAT  
JOB NO. 72-499 FILE NO. 8993-0

TURLEY & WILLIAMS, INC.  
CONSULTING ENGINEERS AND SURVEYORS - 211 NORTH SECOND, TEMPLE, TEXAS - 817/778-2880