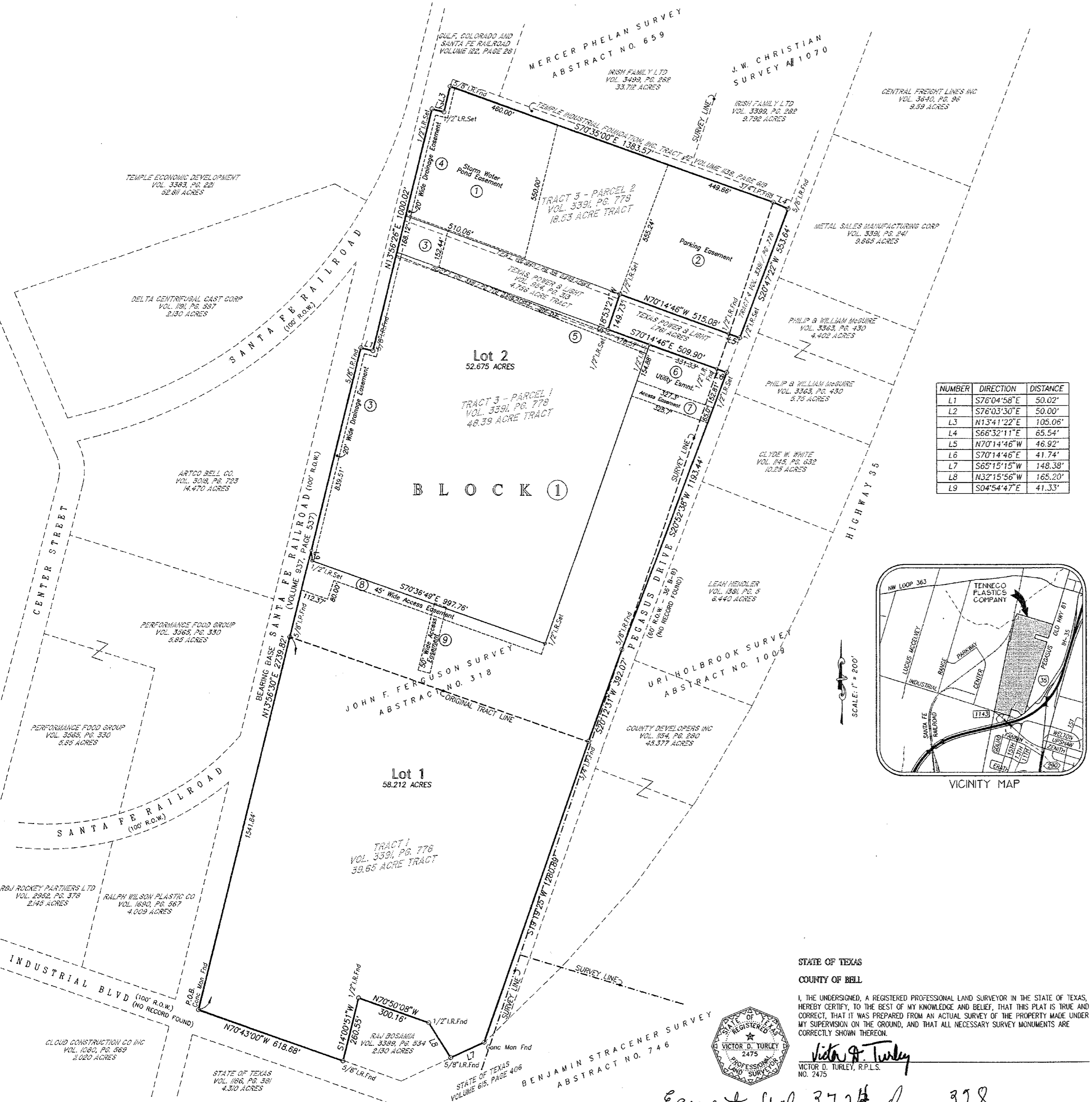


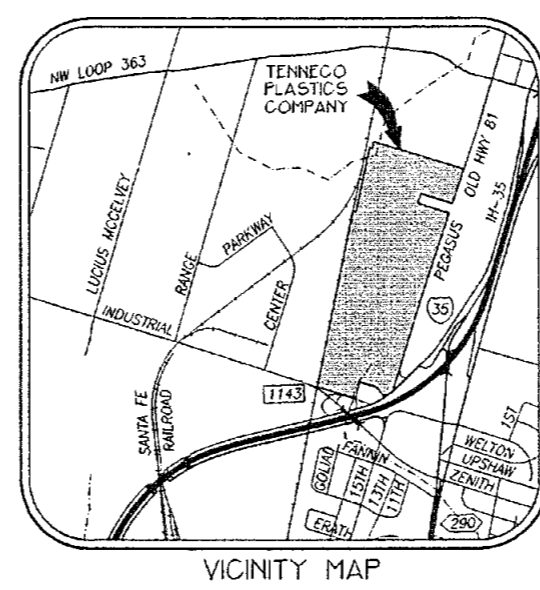
123-D

123-D



NUMBER	DIRECTION	DISTANCE
L1	S76°04'58"E	50.02'
L2	S76°03'30"E	50.00'
L3	N13°41'22"E	105.06'
L4	S66°32'11"E	65.54'
L5	N70°14'46"W	46.92'
L6	S70°14'46"E	41.74'
L7	S65°15'15"W	148.38'
L8	N32°15'56"E	165.20'
L9	S04°54'47"E	41.33'

- EASEMENT DESCRIPTIONS
- 1 - DRAINAGE EASEMENT TO SERVE DETENTION POND AREA
  - 2 - PARKING EASEMENT TO SERVE TRAILER STAGING AREA
  - 3 - DRAINAGE EASEMENT TO SERVE INFLOW AREA TO DETENTION POND
  - 4 - 20' WIDE DRAINAGE EASEMENT TO SERVE DRAINAGE SWALE WEST OF SITE
  - 5 - 20' WIDE DRAINAGE EASEMENT TO SERVE DRAINAGE SWALES AND PIPES NORTH OF SITE
  - 6 - UTILITY EASEMENT TO SERVE FIRE PROTECTION CONNECTIONS AND POWER SUPPLY
  - 7 - ACCESS EASEMENT TO SERVE ENTRANCE
  - 8 - 45' WIDE ACCESS EASEMENT TO SERVE FIRE LANES AND CONNECTIONS
  - 9 - 50' WIDE ACCESS EASEMENT TO SERVE TUNNEL BETWEEN BUILDINGS



STATE OF TEXAS  
 COUNTY OF BELL

I, THE UNDERSIGNED, A REGISTERED PROFESSIONAL LAND SURVEYOR IN THE STATE OF TEXAS, HEREBY CERTIFY, TO THE BEST OF MY KNOWLEDGE AND BELIEF, THAT THIS PLAT IS TRUE AND CORRECT, THAT IT WAS PREPARED FROM AN ACTUAL SURVEY OF THE PROPERTY MADE UNDER MY SUPERVISION ON THE GROUND, AND THAT ALL NECESSARY SURVEY MONUMENTS ARE CORRECTLY SHOWN THEREON.

*Victor D. Turley*  
 VICTOR D. TURLEY, R.P.L.S.  
 NO. 2475



EASEMENT PLAT FOR:  
**TENNECO PLASTICS COMPANY**  
 2 LOTS, 1 BLOCK


110.887 ACRES  
 OUT OF AND A PART OF THE JOHN F. FERGUSON SURVEY, ABSTRACT #318  
 and the URI HOLBROOK SURVEY, ABSTRACT #1009  
 A SUBDIVISION IN THE CITY OF TEMPLE,  
 BELL COUNTY, TEXAS

110.887 ACRES MORE FULLY DESCRIBED BY METES & BOUNDS BY SEPARATE FIELD NOTES

TRACT SURVEYED NOVEMBER 4, 1997

RECORDED IN  
 CABINET \_\_\_\_\_ SLIDE \_\_\_\_\_





**TURLEY ASSOCIATES, INC.**  
 ENGINEERING • PLANNING • SURVEYING  
 CONSTRUCTION MANAGEMENT  
 301 N. 3rd ST.  
 TEMPLE, TEXAS  
 E-MAIL: VDTURLEY@AOL.COM

(254) 773-2400  
 (254) 773-3998

---

**EASEMENT PLAT of**  
**TENNECO PLASTICS COMPANY**  
 JOHN F. FERGUSON SURVEY, ABSTRACT #318  
 URI HOLBROOK SURVEY, ABSTRACT #1009  
 A SUBDIVISION IN THE  
 CITY OF TEMPLE, BELL COUNTY, TEXAS

**DEVELOPED BY:**  
**TENNECO PLASTICS COMPANY**  
 3000 PEGASUS DRIVE  
 TEMPLE, TEXAS 76503

---

REVISIONS		
1-8-98	Rev. Esmt. #7	jn

---

<b>DATE:</b> NOVEMBER 24, 1997	
<b>DRN. BY:</b>	dM/AMJ
<b>REF.:</b>	
<b>LEVEL BOOK</b>	
<b>JOB NO.:</b>	97-507
<b>SHEET</b> 1 <b>OF</b> 1	
<b>COMPUTER DWG. NO.</b>	97507-EP
<b>10022-D</b>	
<b>DRAWING NUMBER</b>	

*Easement Vol. 3724 Page 328*