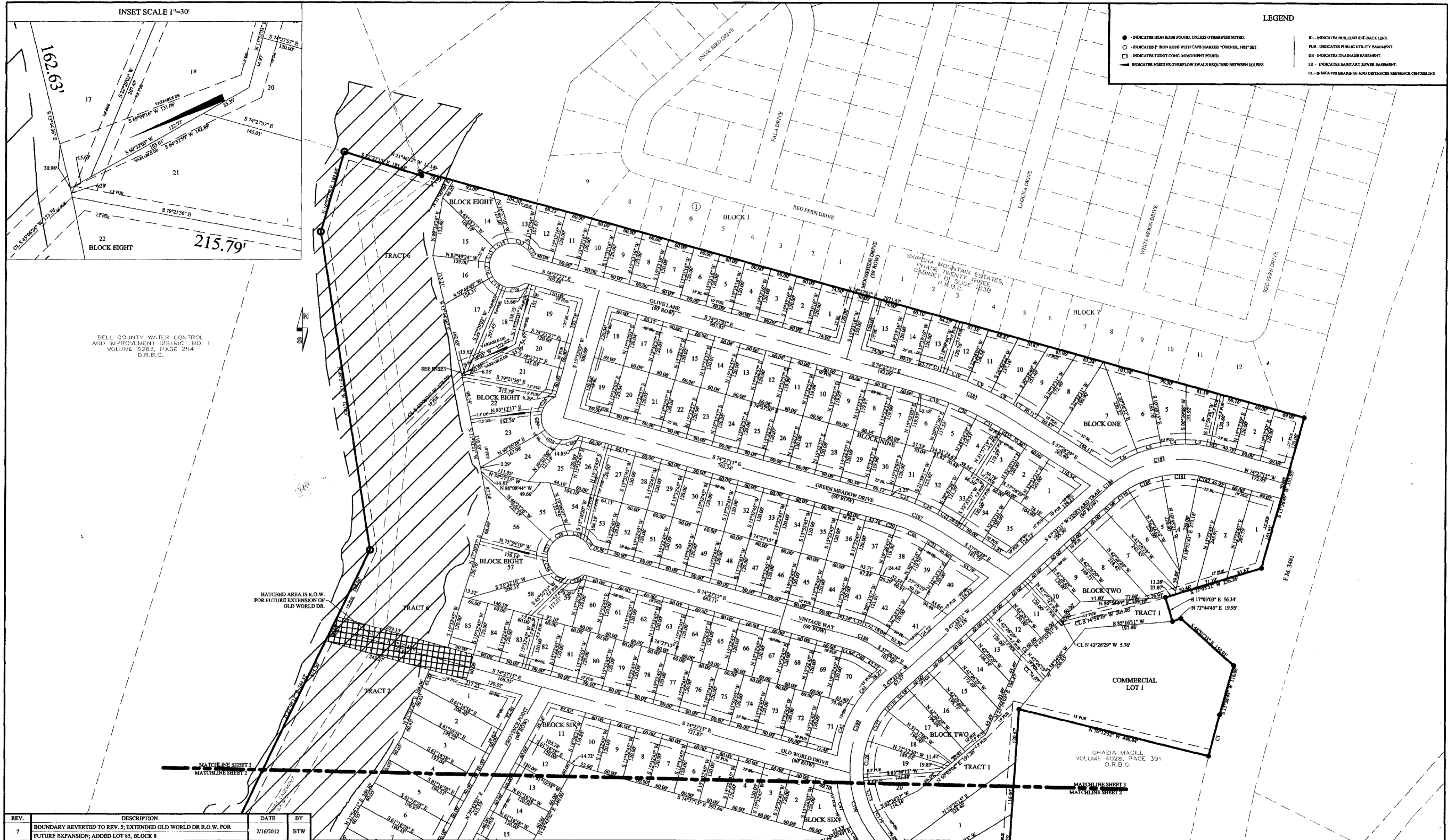
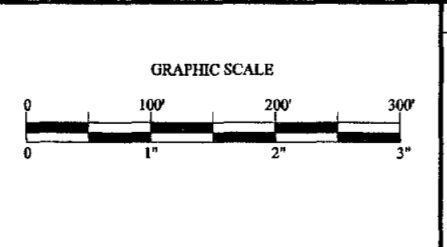


D  
356B  
3 of 4



REV.	DESCRIPTION	DATE	BY
7	BOUNDARY REVERTED TO REV. 5; EXTENDED OLD WORLD DR R.O.W. FOR FUTURE EXPANSION; ADDED LOT 85, BLOCK 8	2/16/2012	BTW
6	REVISED BOUNDARY ON WEST SIDE OF SUBDIVISION	1/31/2012	BTW
5	DISTANCE AND BEARING ERRORS WERE CORRECTED	1/31/2012	BTW
4	ADDED UTILITY EASEMENT BETWEEN LOTS 10 & 11 BLOCK 2 AND ON TRACT 1	3/8/2011	BTW
3	CHANGED LOT LAYOUT NOTED CHANGED LOTS ON LOT AREAS SHEET	3/1/2011	BTW
2	CITY REQUESTED CHANGES	12/21/2010	BTW
1	ORIGINAL RELEASE	12/10/2010	BTW

PROJECT INFORMATION	
TOTAL SIZE:	143.27 ACRES
TOTAL BLOCKS:	10
RESIDENTIAL LOTS:	406
COMMERCIAL LOTS:	2
TOTAL TRACTS:	6



LEGAL DESCRIPTION  
BEING PART OF THE V.A. CROSS SURVEY, ABSTRACT #239, E.M. SPROTT SURVEY, ABSTRACT #1137, AND P. WILLIAMSON SURVEY, ABSTRACT #1099  
BELL COUNTY, TEXAS

OWNER  
WBW Development, LTD.  
Bruce White, President  
3000 Illinois Ave., Suite 100  
Killeen, TX 76541  
PH (254) 953-5353  
FX (254) 953-0002

FINAL PLAT FOR  
TUSCANY MEADOWS PHASE 1  
CITY OF HARKER HEIGHTS, BELL  
COUNTY, TEXAS

SURVEYOR  
A. W. KESSLER  
VERA & ASSOCIATES, L.C.  
3701 SIERRA DR  
GEORGETOWN TX 76627  
RPLS NO. 1852  
PH (512) 864-9804  
FX (512) 864-7650  
SURVEY DATE: AUGUST 10, 2010

ENGINEER  
SCOTT A. BROOKS  
Yalco, LLC  
3000 Illinois Ave., Suite 100  
Killeen, TX 76543  
PH (254) 953-5353  
FX (254) 953-0052  
Texas Registered  
Engineering Firm F-10264

SHEET  
3  
OF  
4

INSTR # 2012-00012515 CabD side view

CAB D / 356 B